

Delayed spinal cord injury following microchip placement in a dog

S. K. Joslyn¹, P. G. Witte², H. W. Scott²

doi:10.3415/VCOT-09-12-0123

Supplementary files: Original images from paper, which were printed in greyscale, shown in full-colour.

Fig. 3 Volume-rendered, three-dimensional right lateral projection of the computed tomographic study of the caudal cervical vertebrae. Metallic densities are assigned with a green colour; therefore, the microchip foreign body highlights in green. The image is inverted to allow for orientation (cranial to the left). The right aspect of the spinal column has been digitally removed showing the tip of the microchip projecting into the vertebral canal. The sixth cervical vertebra is identified by the ventral tubercle.

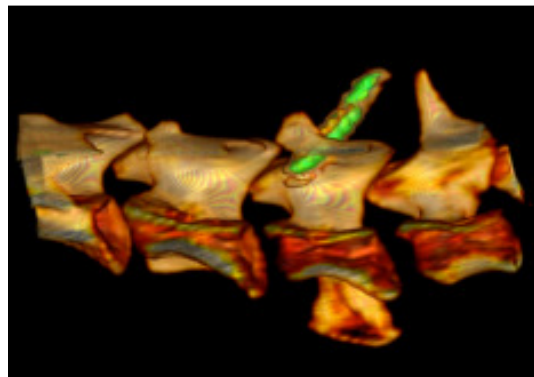


Fig. 4 Volume-rendered, three-dimensional cranial projection of the computed tomographic study of the sixth cervical vertebra. The image shows the green (metallic) foreign body protruding into the vertebral canal.

